

How many pollinators can you spot?

Did you know that we have pollinating insects to thank for every third mouthful of food we eat? Bumblebees are the super heroes of the pollinators – but they are not alone. How many pollinators can you spot today?

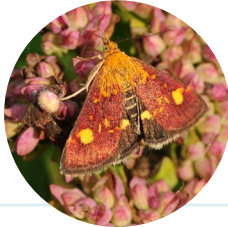
Spotted



Spider

Can you spot a spider and its web? Some spiders have hairy bodies and legs – pollen sticks to them as they move from flower to flower.

Spotted



Mint Moth

This is a day-flying moth and you might spot one on a mint plant on your walk. Identifying moths from butterflies can be tricky – look at their heads. Butterflies have clubbed antennae and moths are more feathery.

Spotted



Butterfly

Butterflies use their long proboscis (tongue) to feed on nectar. Can you find a butterfly uncurling its proboscis to feed? Butterflies taste with their feet to make sure their caterpillars have a tasty plant to eat.

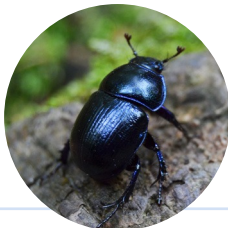
Spotted



Wasp

The accidental pollinator. As wasps are not furry, pollen does not stick to their bodies. Even without hairs, several wasp species are able to effectively transport pollen as they move. Look out for their bright yellow stripes and waist.

Spotted



Beetle

Beetles are thought to be the first pollinating insects on earth. Look for a beetle with a shiny hard shell – the exoskeleton (outside skeleton) armour that protects its body.

Spotted



Bumblebee

There are twenty four different species of bumblebee in the UK. Can you spot a red, white or buff-tailed bumblebee feeding on nectar? The females have bright yellow pollen baskets on their legs.

Spotted



Fly

Flies are one of the largest groups of pollinators in the UK – they are able to fly in extreme weather conditions. This makes them amazing pollinators – when other insects are hunkering down!

Spotted



Honey Bee

Often found in managed hives and responsible for pollinating 5 to 15% of wild flowers. This leaves up to 85% needing wild pollinators to do the job.

Spotted



Common Carder Bee

Look for this ginger-coloured bee. It has a long tongue, helping it feed on flowers with long tubular flower heads like heather, clover and lavender.

Spotted



Marmalade Hoverfly

Hoverflies are the most important pollinator among flies. Most hoverflies feed on nectar but the marmalade hoverfly also feeds on pollen.



CHATSWORTH

Help our landscape team to care for nature by sticking to the marked paths and leaving no trace behind when you leave. Did you know Chatsworth is a registered charity? Find out how you can support our work at chatsworth.org/support-us

© Chatsworth House Trust, 2023. Chatsworth House Trust is a registered charity (England & Wales, no 511149). For similar guides visit chatsworth.org/free-things-to-do-at-chatsworth

FOLLOW US ON

